



Darline Graham
Commissioner

South Carolina Commission for the Blind

1430 Confederate Avenue • Columbia, SC 29202
803-898-8731 or 888-335-5951 • Fax: 803-898-8867

Agency Information

Our mission is to provide quality individualized vocational rehabilitation services, independent living services and prevention-of-blindness services to blind and visually impaired consumers, leading to competitive employment and social and economic independence.

SCCB offers **specialized and personalized services for individuals ages 3 and up who are blind or have vision loss** that lead to social and/or economic independence.

Employment

In our **Vocational Rehabilitation** program, which includes a residential training center, we help eligible consumers find, maintain, or regain employment. We provide counseling and guidance, educational opportunities, vocational training, and assistive technology to prepare them for career opportunities. Pre-employment transition services (pre-ETS) are provided for youth ages 13-21.

Our **Business Enterprise Program** helps qualified individuals become entrepreneurs and operate their own vending or food service business.

Independence

We help consumers remain independent within their homes and communities.

Children's Services assists children ages 3-12 with building confidence and independence and ensuring they have assistive technology available at home.

Older Blind Services assists those 55 and older in remaining self-sufficient by providing specialized training and low vision devices.

Prevention

We provide financial assistance for sight-saving surgeries for individuals who don't have insurance, who are underinsured, or who meet financial need requirements. Education on blindness prevention and eye safety is provided around the state.



Darline Graham
Commissioner

South Carolina Commission for the Blind

1430 Confederate Avenue • Columbia, SC 29202
803-898-8731 or 888-335-5951 • Fax: 803-898-8867

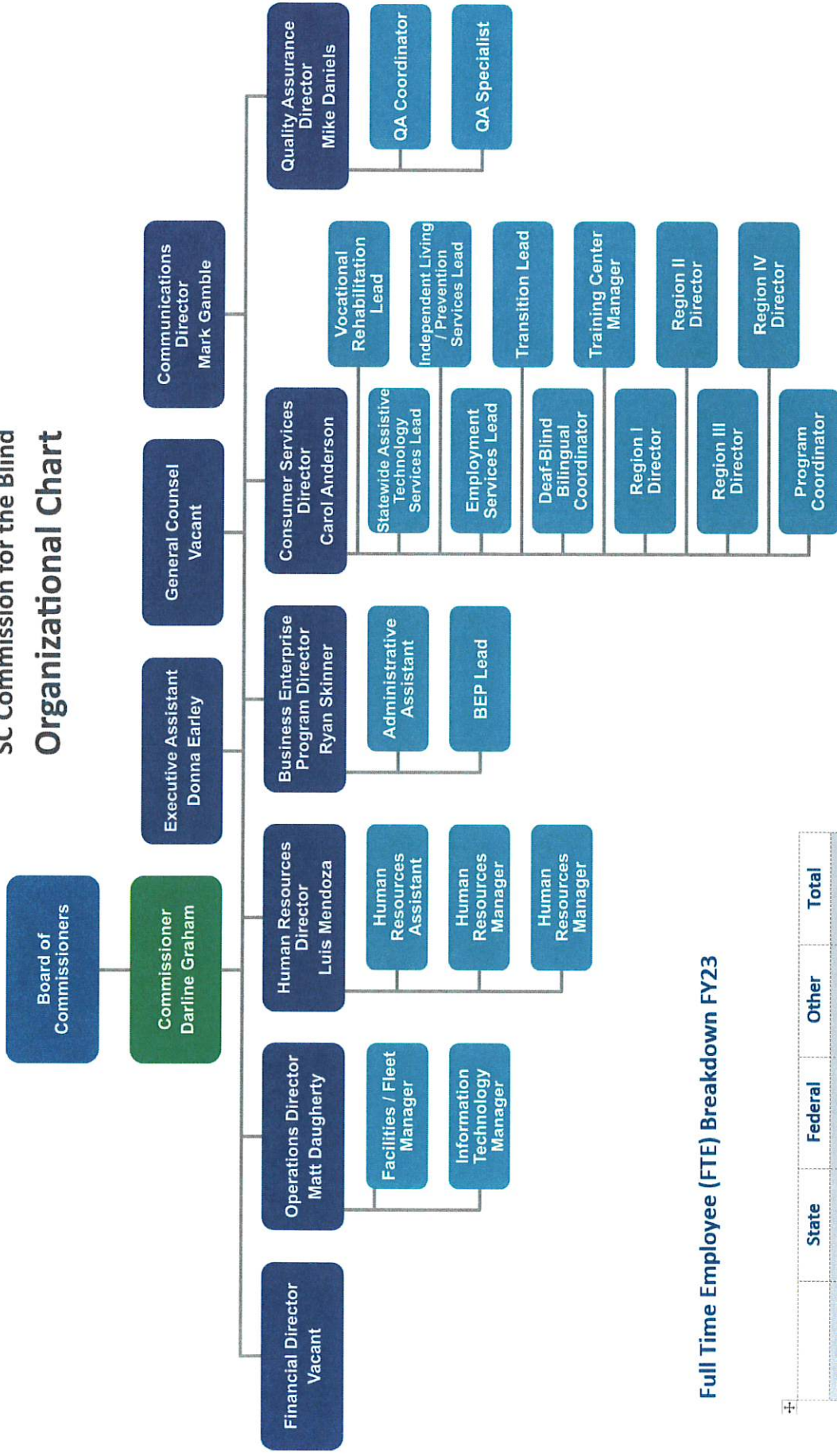
State Carryforward Amount

Regular carryforward	\$ 10,014.98
Capital project carryforward	\$30,000.00

We plan to use carryforward towards the state portion of Capital projects (ex: Columbia Complex renovations).



SCCB
SC Commission for the Blind
Organizational Chart



Full Time Employee (FTE) Breakdown FY23

	State	Federal	Other	Total
Authorized	38.38	83.11	1	122.49
Filled	32.33	62.60	1	95.93
Vacant	6.05	20.51	0	26.56